

**SIR  
NORMAN  
FOSTER**

FOSTER + PARTNERS  
1935-

"It takes a lot of effort to make  
a building look effortless."

-Norman Foster





**FOSTER (RIGHT)**  
WITH FULLER AND COLLEAGUES



**BUCKMINSTER FULLER (RIGHT)**  
WITH FOSTER



**THE GEODESIC DOME - 1954**  
BUCKMINSTER FULLER  
THE UNITED STATES OF AMERICA PAVILION  
MONTREAL'S WORLD FAIR



**FLIGHT**  
FOSTER IN HIS AIRPLANE







# NORMAN FOSTERS PHILOSOPHY

“Architecture is a connection with the past.”-Foster

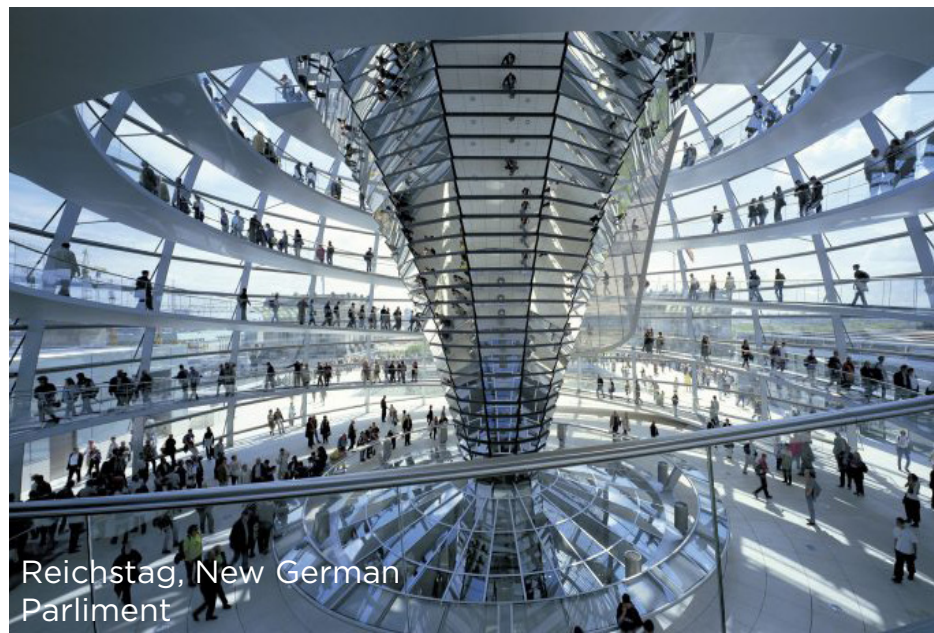
“As an architect, you design for the present, with an awareness of the past, for a future which is essentially unknown.”-Foster

“Architecture is an expression of values – the way we build is a reflection of the way we live. This is why vernacular traditions and the historical layers of a city are so fascinating, as every era produces its own vocabulary. Sometimes we have to explore the past to find inspiration for the future. At its most noble, architecture is the embodiment of our civic values.”-Foster

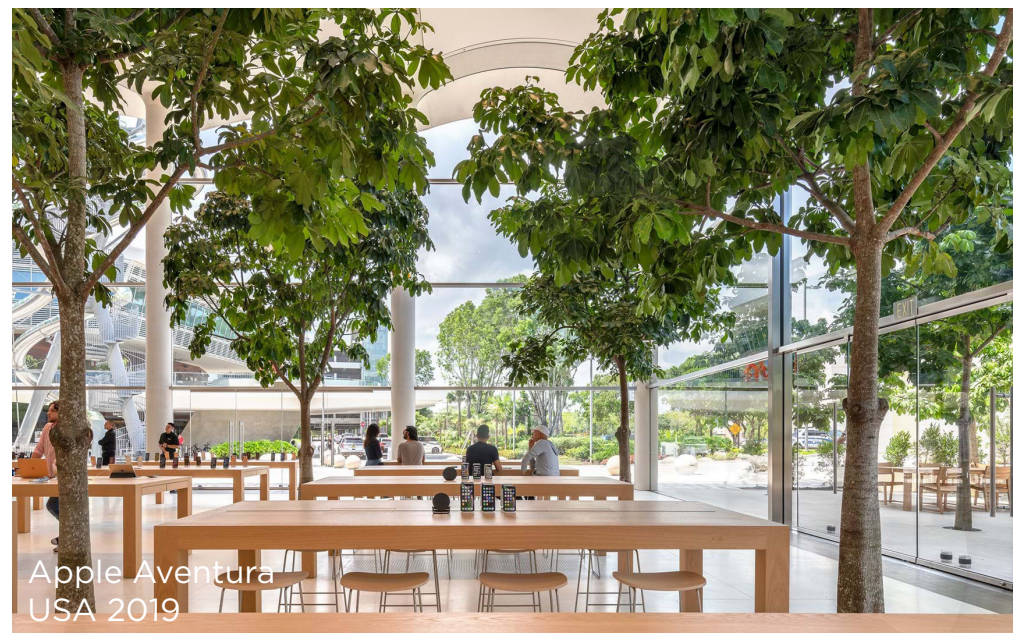




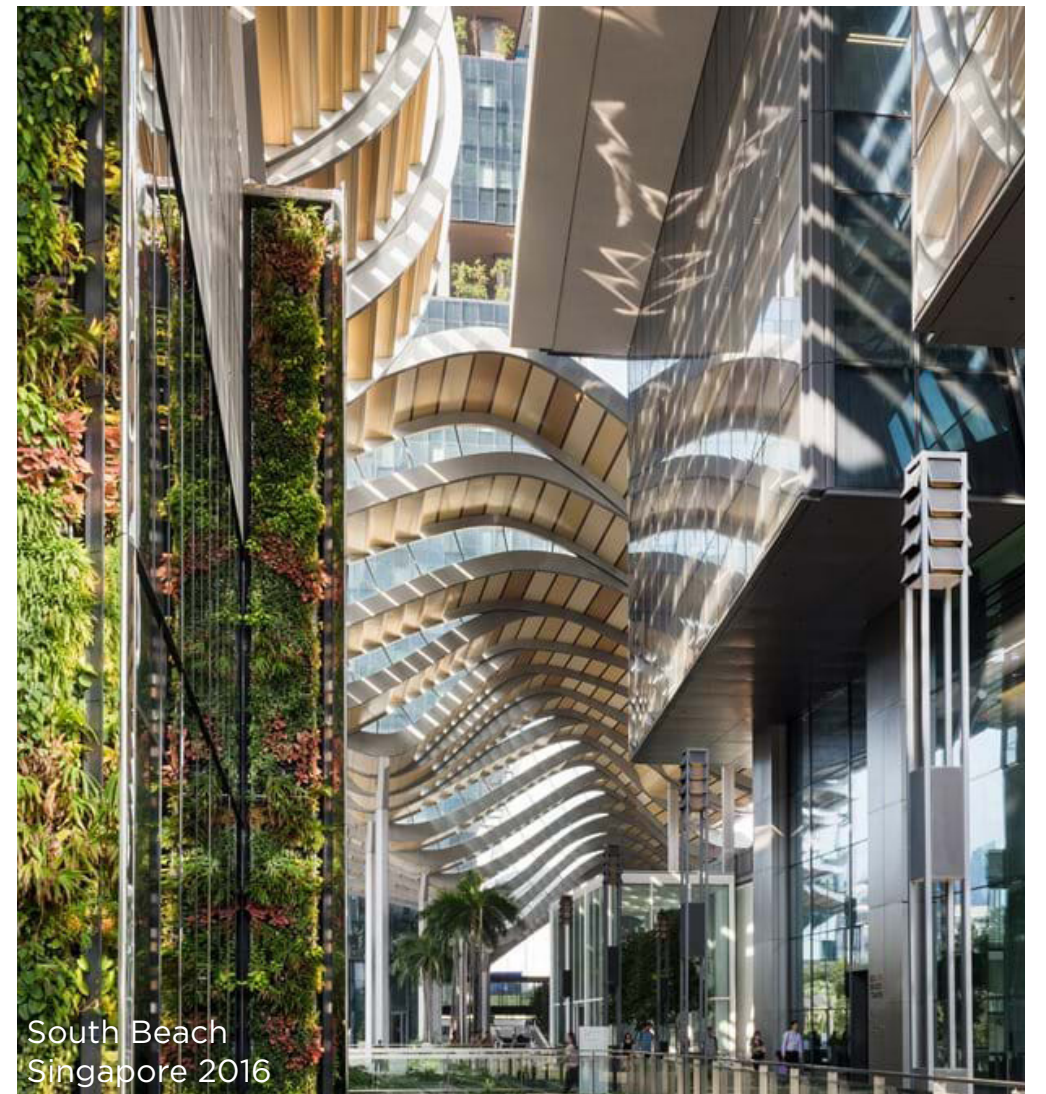
Great Court at the British Museum



Reichstag, New German Parliament



Apple Aventura USA 2019



South Beach  
Singapore 2016

Designing form for the function of the present needs with the ability to adapt to the function of future needs

The structure is what makes the building. A building is putting the structure and its abilities on display.

Don't construct decoration but decorate construction.

Technology is a means to being able to create anything you imagen

"Everything we design is a response to the particular climate and culture of a particular place" -Foster

"The city is a response to human needs. There is a need to tackle the challenges we face as the world's populations proliferate and become increasingly urbanized. However, there is no single solution with global applicability. In some cases, there may be a need for a new city - in others, the focus will be on the densification or development of an existing city. No two scenarios are the same." -Foster





FOSTER+PARTNERS  
1975  
IPSWICH, UNITED KINGDOM

# WILLIS FABER DUMAS BUILDING

“Willis Faber seems like some  
Spielbergian spaceship that has  
settled into the weave of the town...”

-The Architectural Review



## **WILLIS FABER DUMAS BUILDING**

FOSTER+PARTNERS

1975

IPSWICH, UNITED KINGDOM



**“...Opaque and visually silent by day, transparent and winking with ethereal light after sunset.”  
- The Architectural Review**





**WILLIS FABER DUMAS BUILDING**

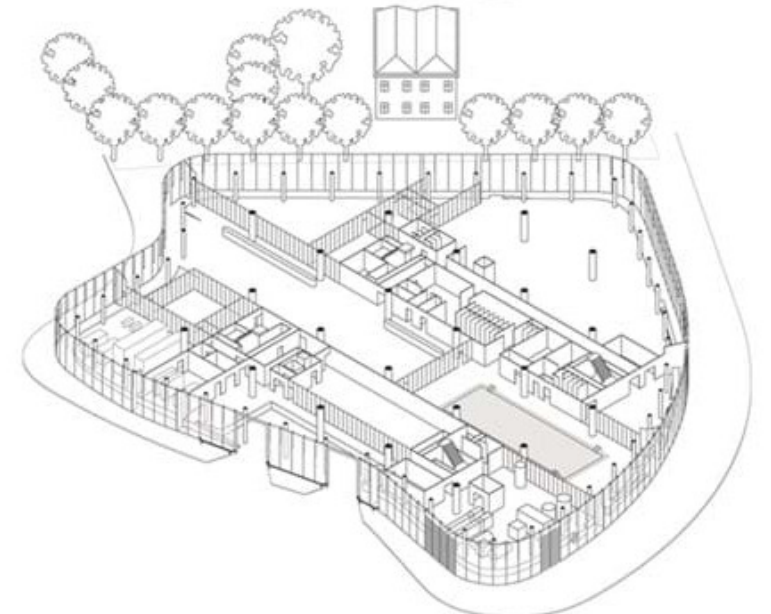
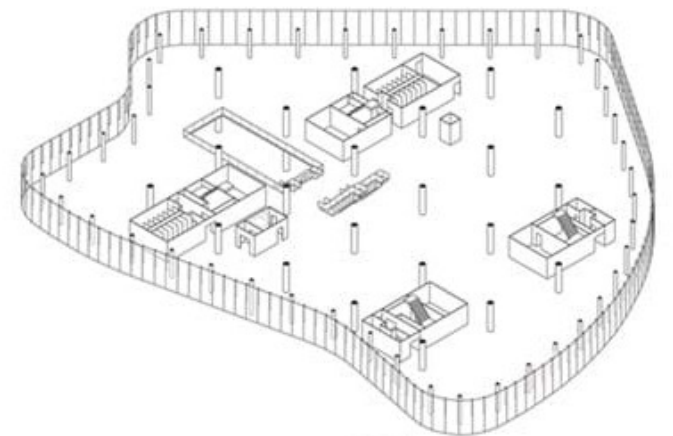
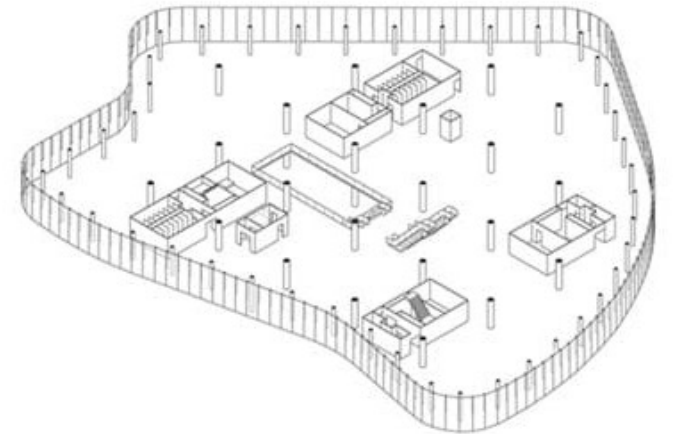
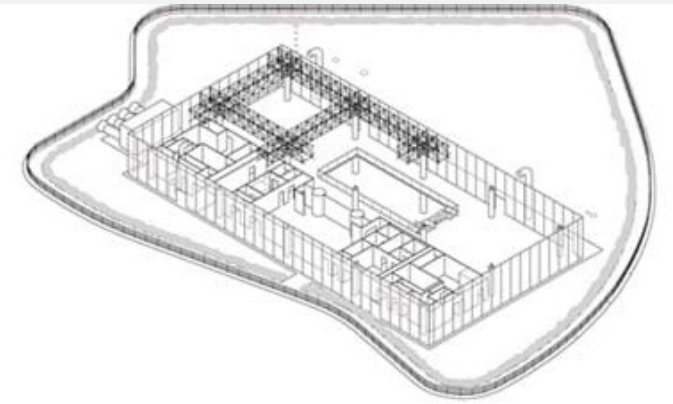
FOSTER+PARTNERS

1975

IPSWICH, UNITED KINGDOM



**TYPICAL OFFICE SPACE**







## **WILLIS FABER DUMAS BUILDING**

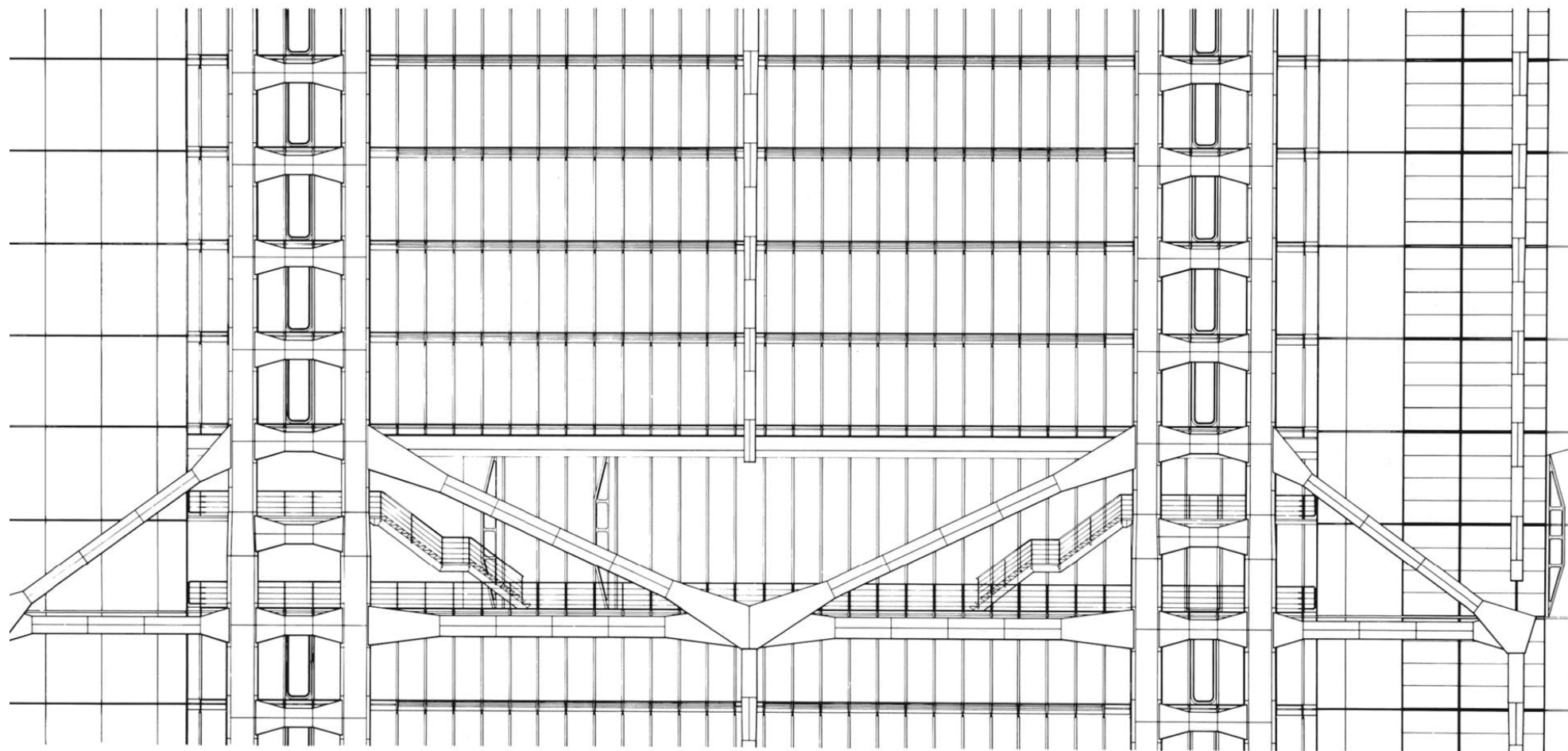
FOSTER+PARTNERS

1975

IPSWICH, UNITED KINGDOM







# HONGKONG SHANGHAI BANK

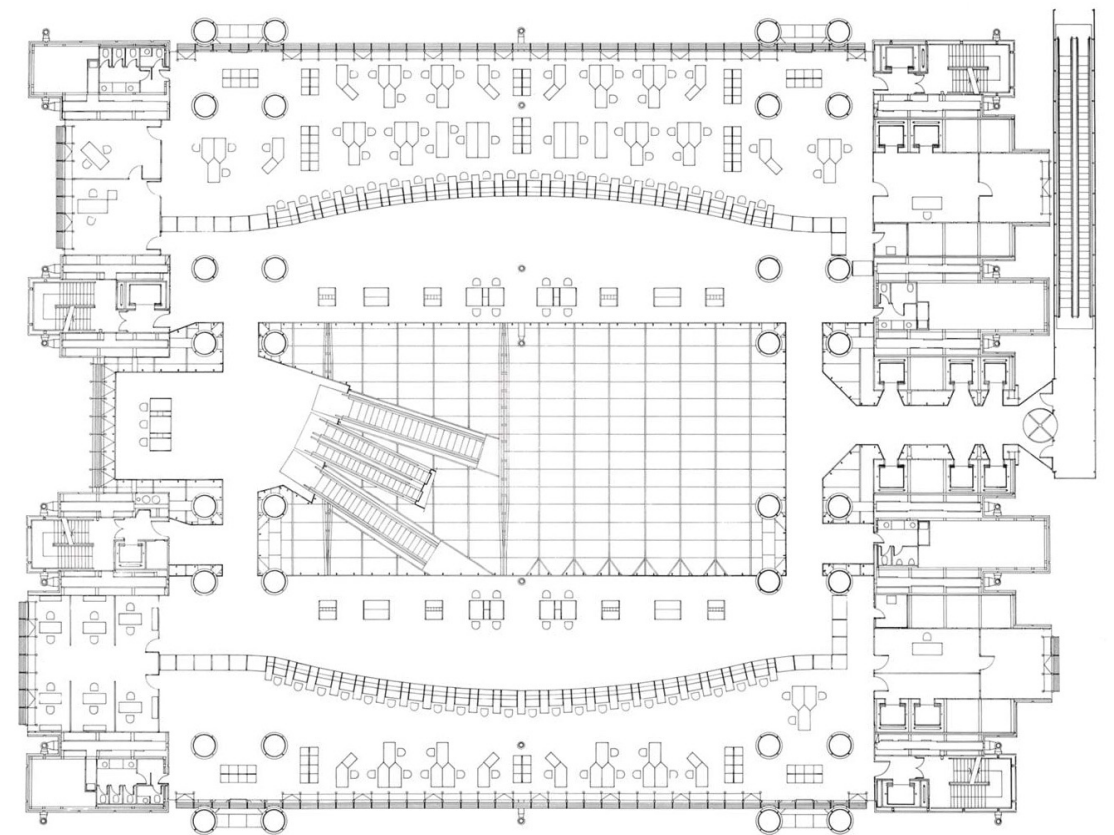
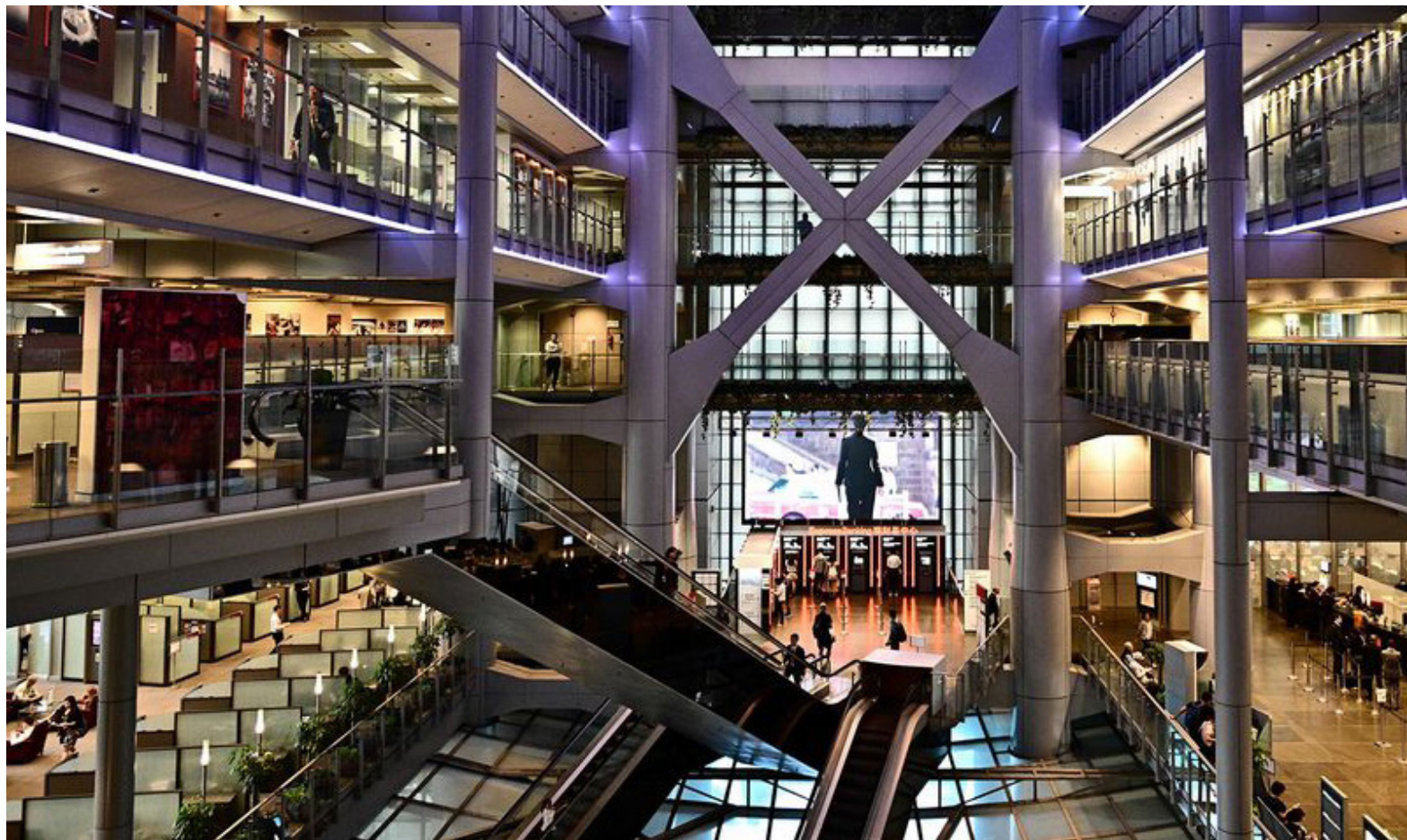
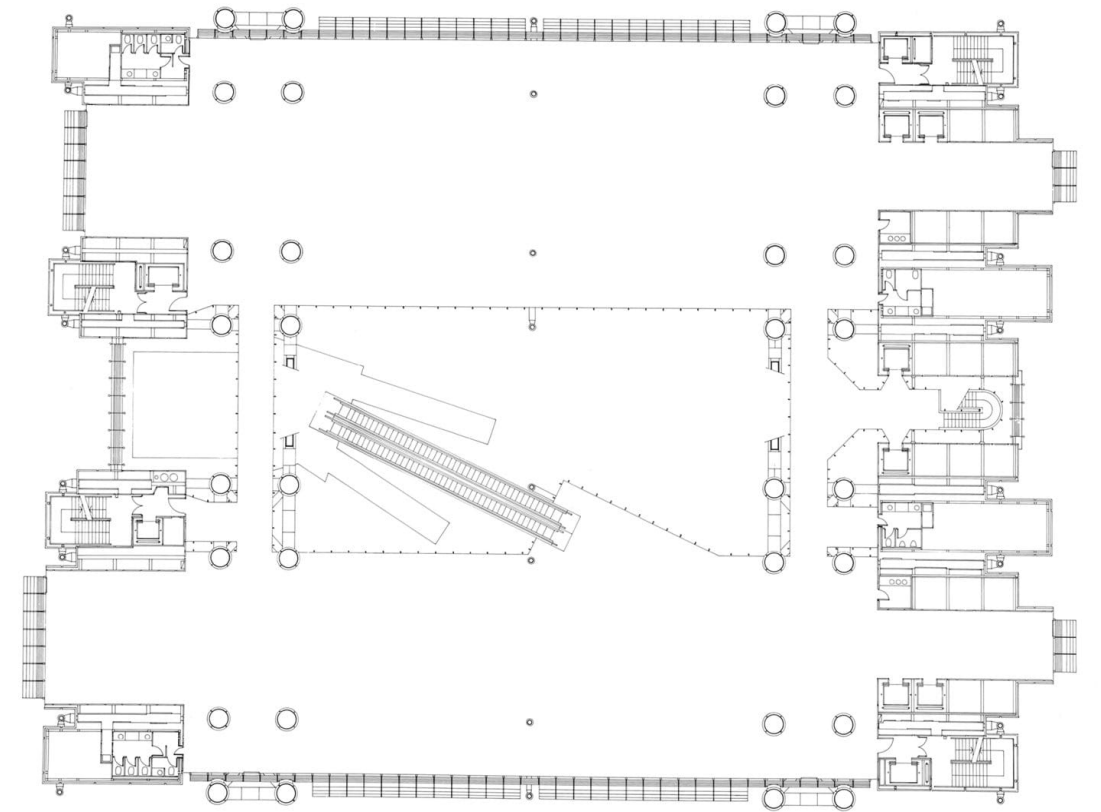
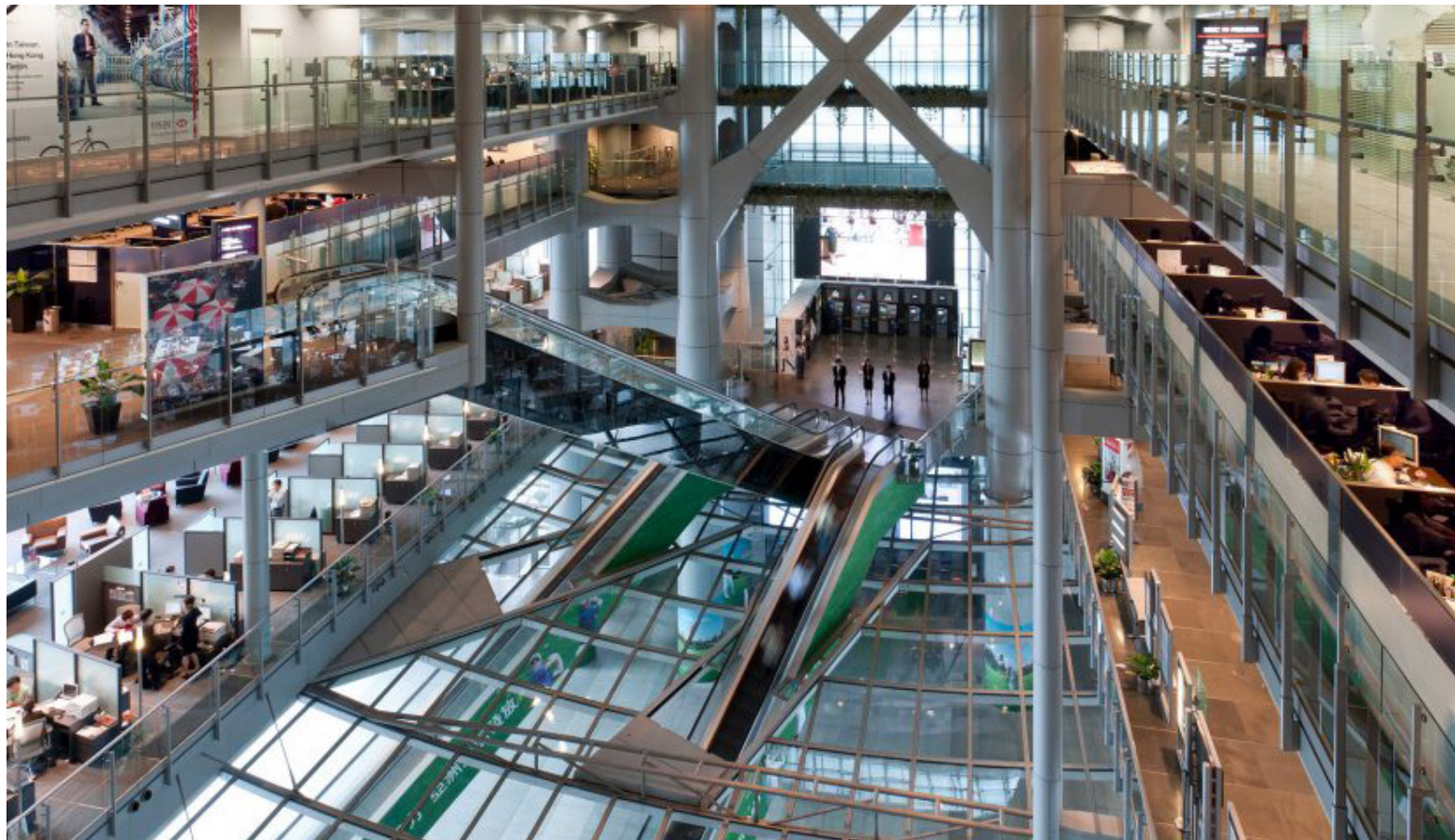
(HSBC main building)

Hongkong, China, 1989

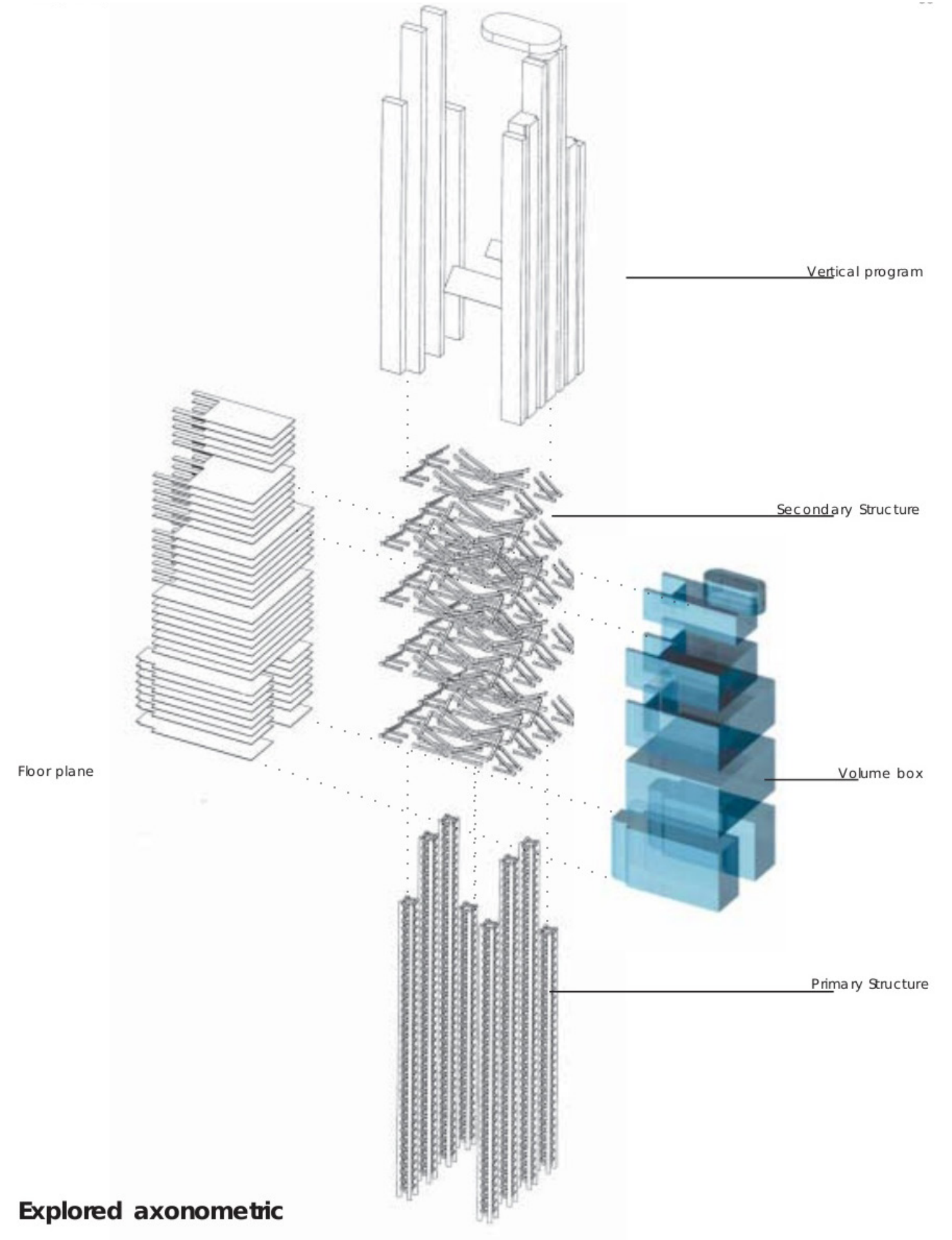


“If I tried to give you a word picture of the Hong Kong tower, let’s compare it with a typical tower of the day, which has a central core, there’s a space around it, every elevation is the same, In the central core, which divides the space, there are the lifts, the staircases, the mechanical equipment. Hong Kong bank was different, The structure, which was normally hidden inside, is suddenly there on the outside for all to see, all the stuff that was in the traditional central core has been taken out and is expressed on the sides.”-Foster

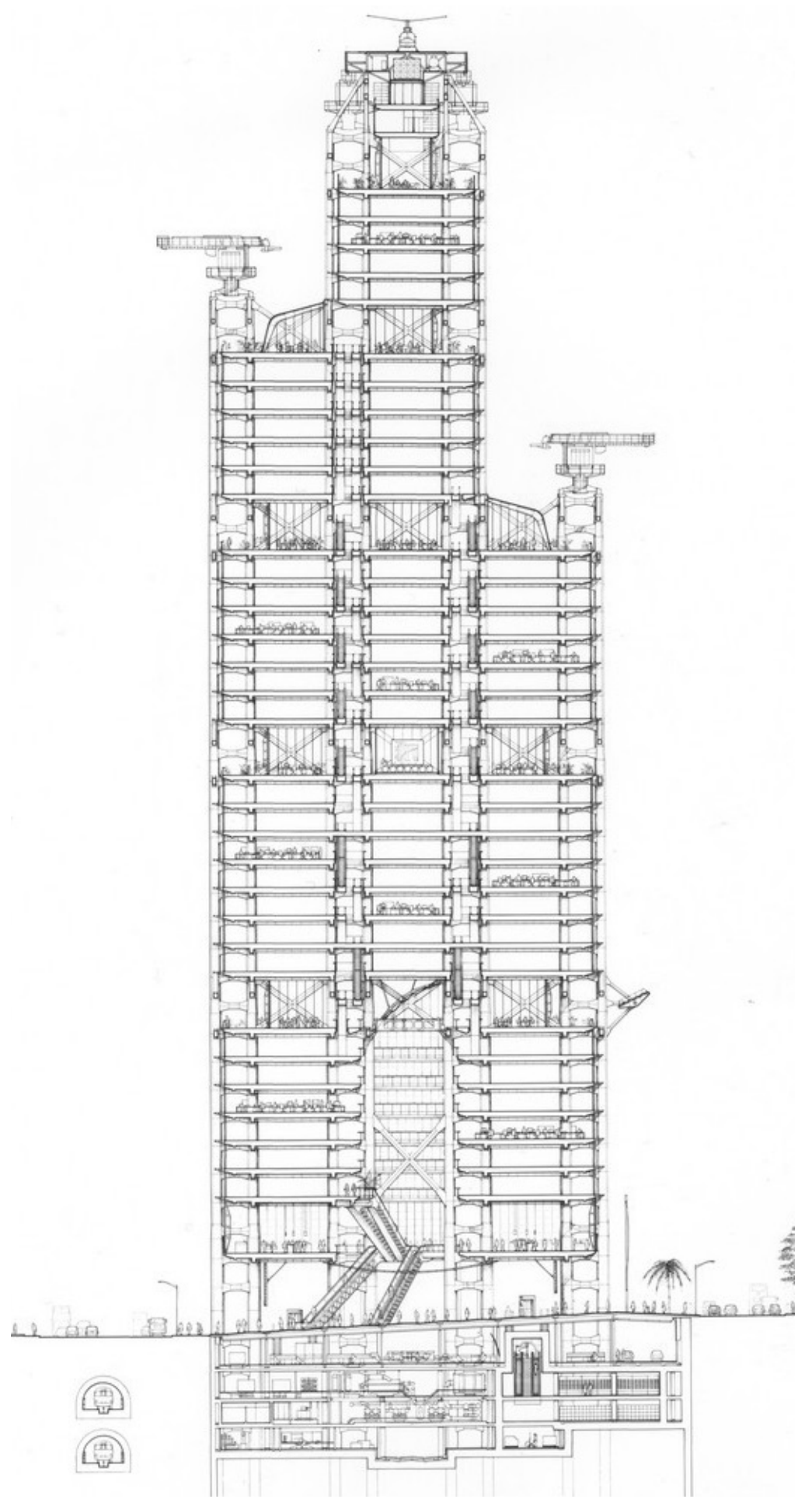




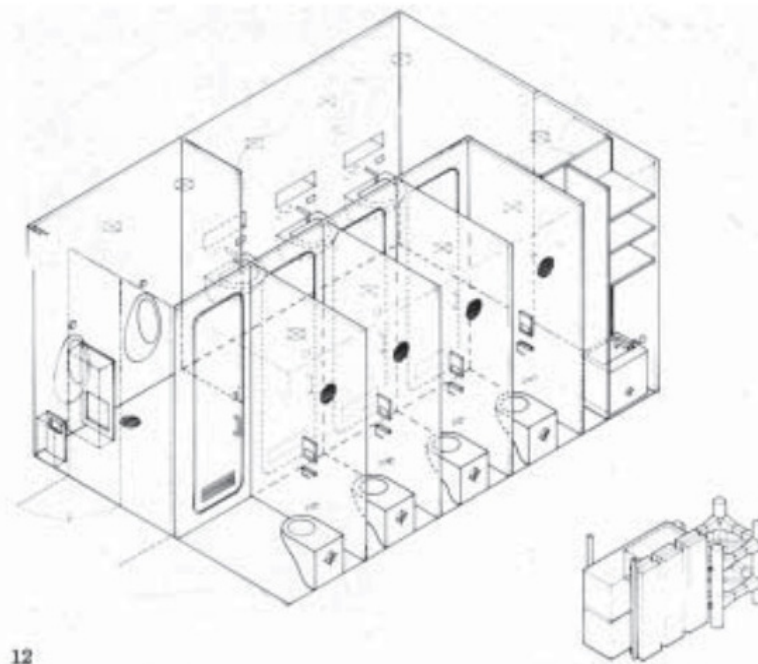
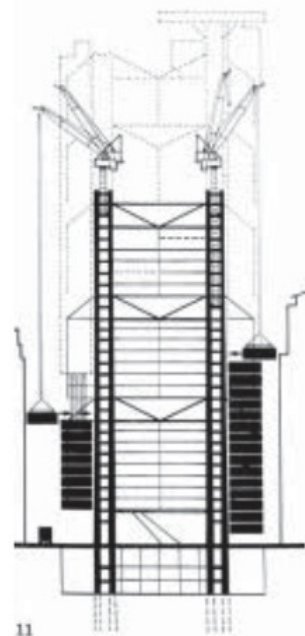
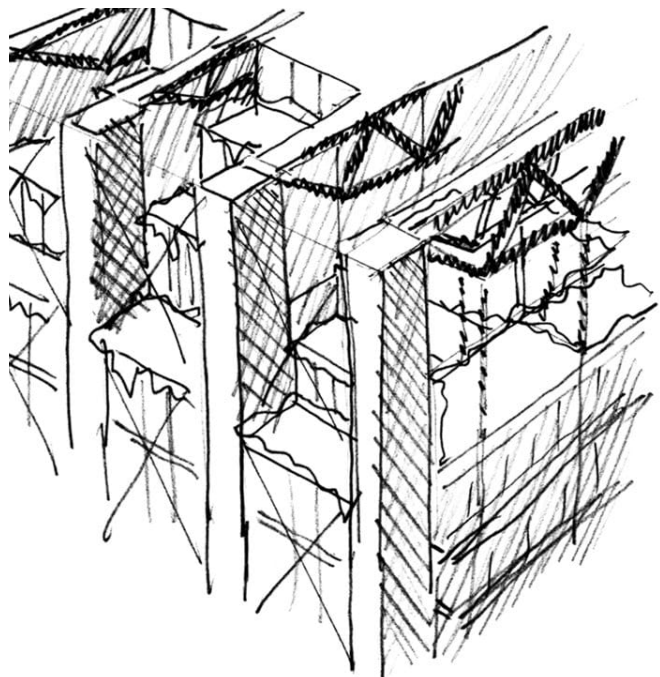
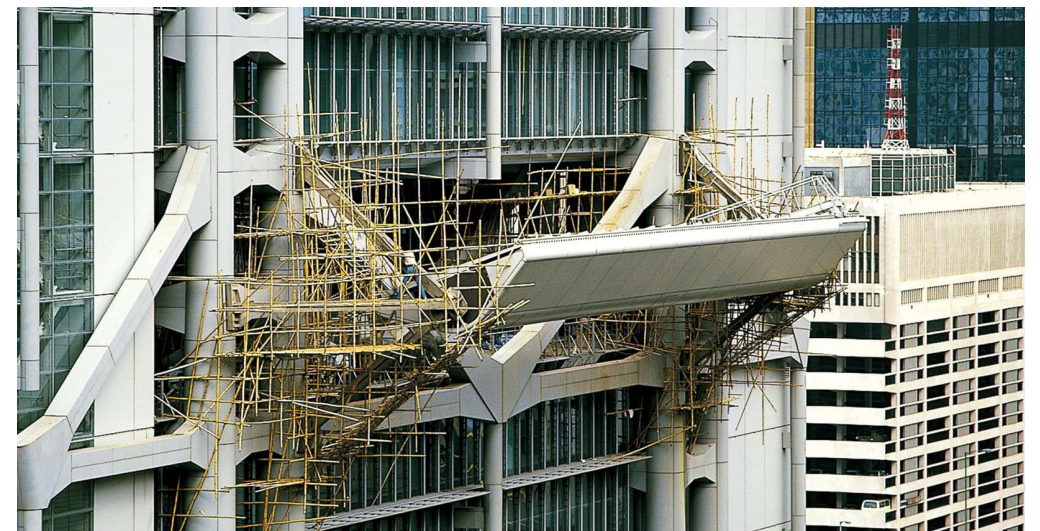
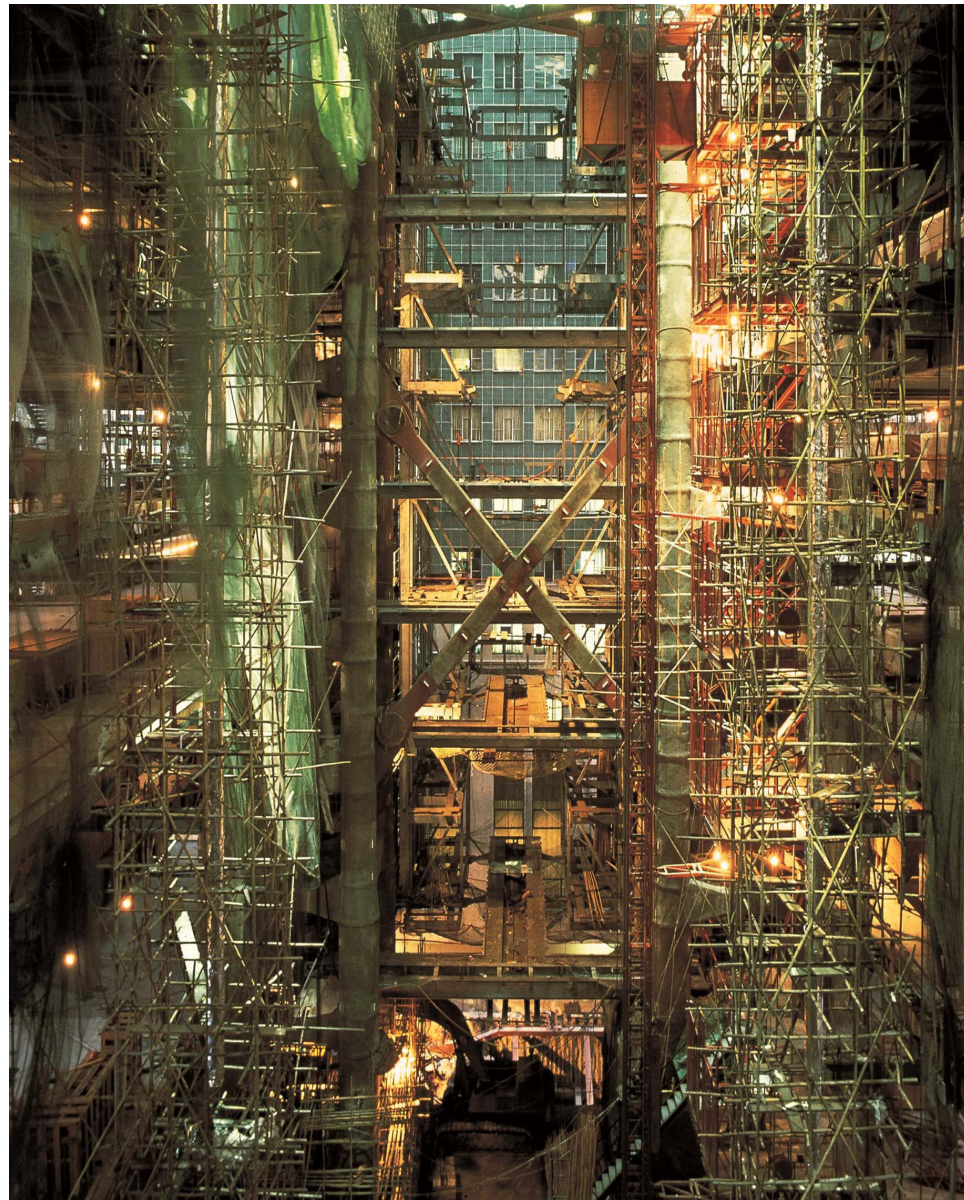








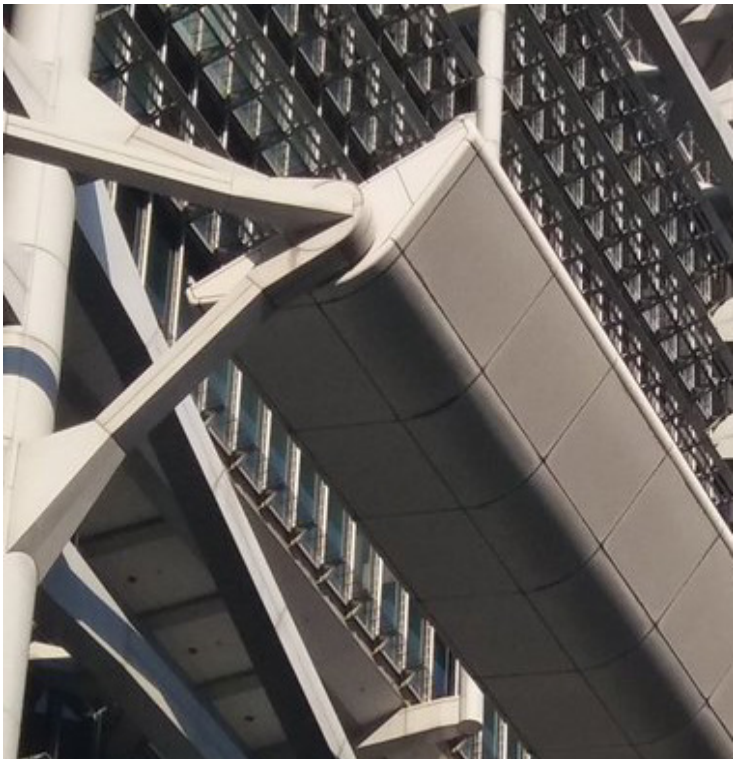
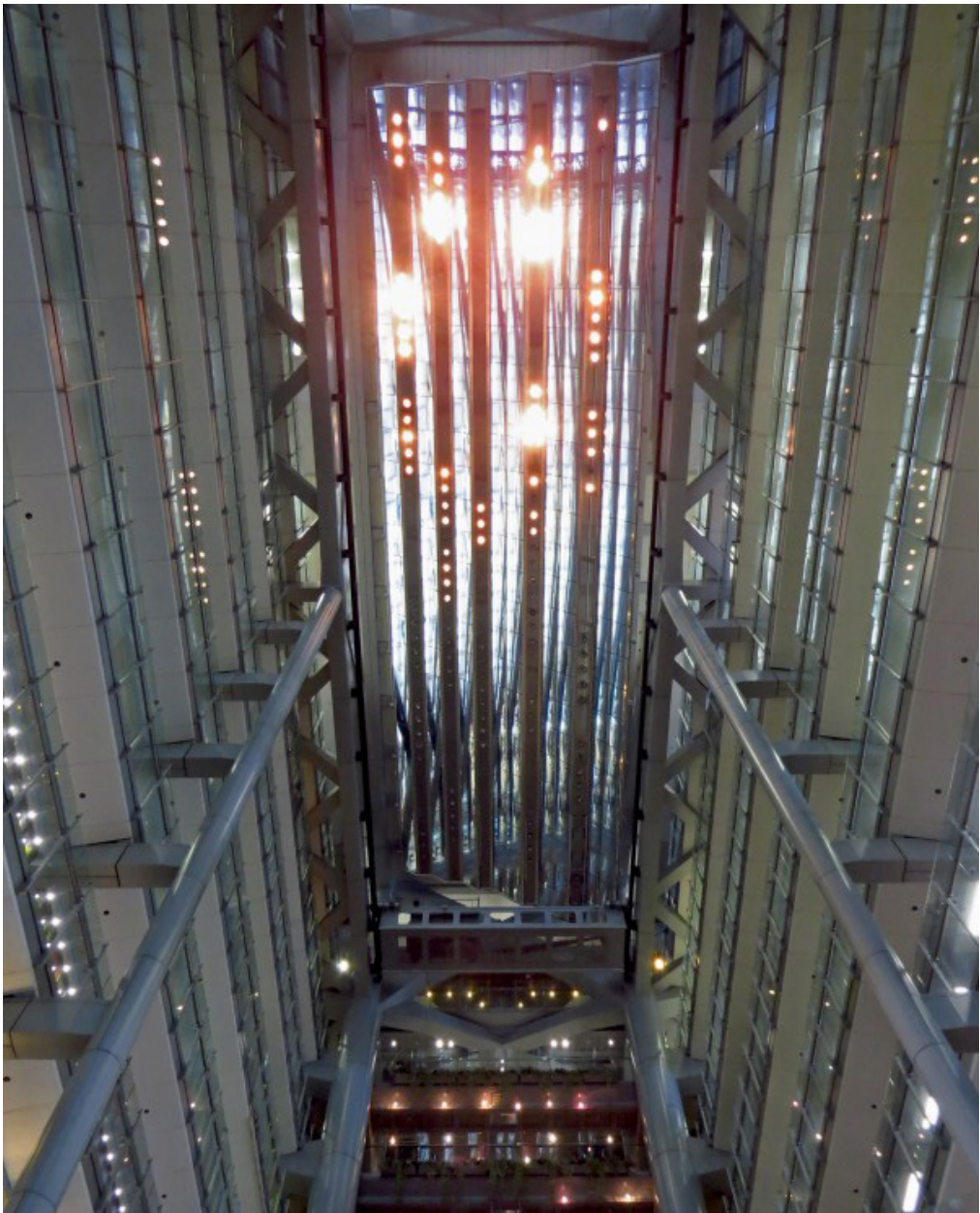
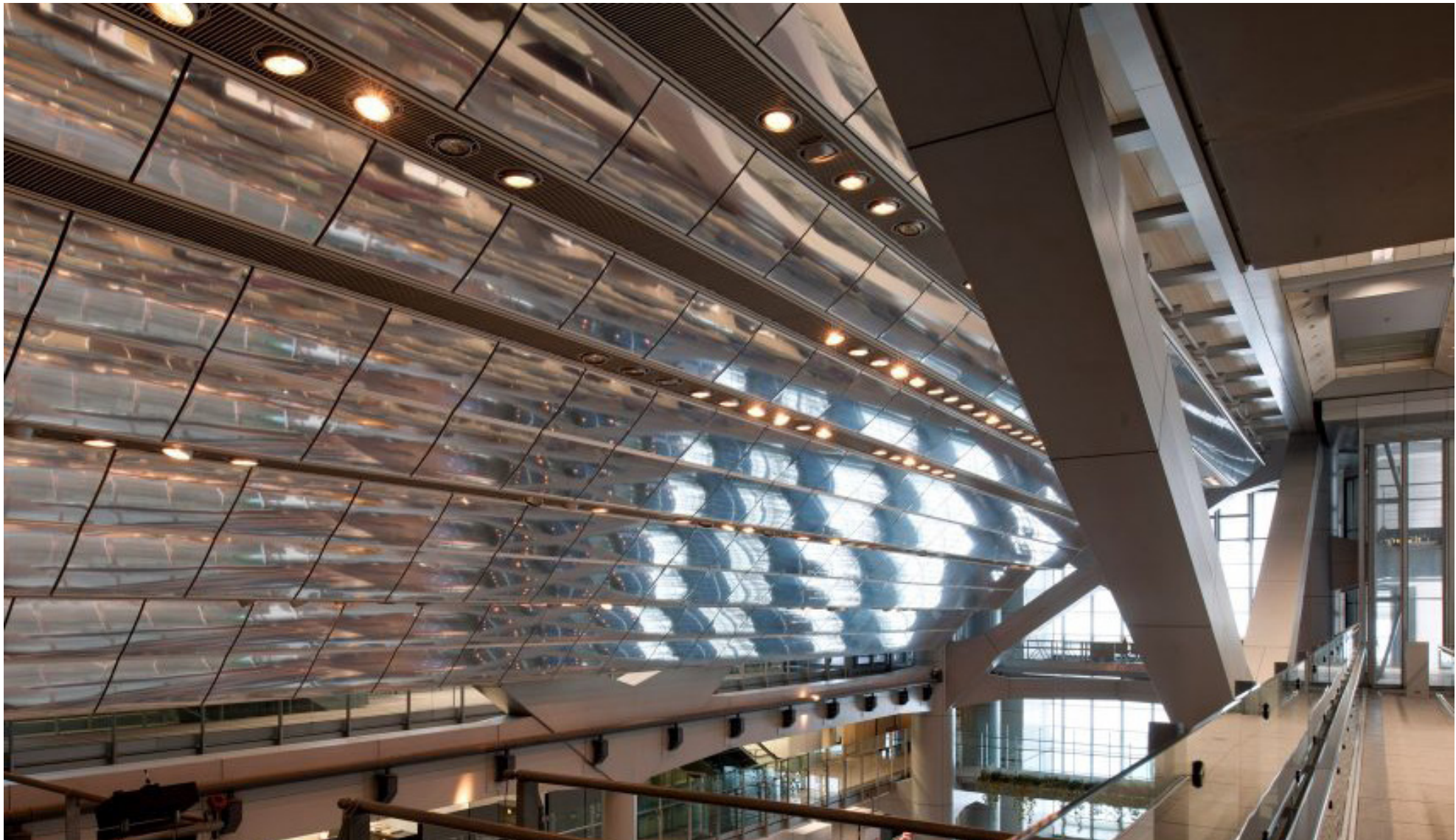




“The Hong Kong bank was an extraordinary adventure, because it wasn’t a building that could have been built in Hong Kong. Hong Kong, then they did not have the technology, the fabrication skills, So it was truly a component building that was shipped from America, from Japan, from the UK, and assembled on site. So in that sense, it was totally prefabricated. I mean, the bathrooms would come totally sealed. And they had everything in there, right down to the disposable towels, the toilet roll holders, the wash basins.” -Foster

“So to seek to reinvent the nature of a tall building, to have that made on different continents around the world, and then to bring that in, to assemble it on a very restricted site, to use traditional elements such as bamboo scaffolding, it was a heroic undertaking. And, of course, it was an incredible learning curve.” -Foster









# REICHSTAG PARLIAMENT BUILDING

FOSTER+PARTNERS  
1999  
BERLIN, GERMANY

“Architecture is an expression of values.”

-Norman Foster





**FIRE OF 1933**

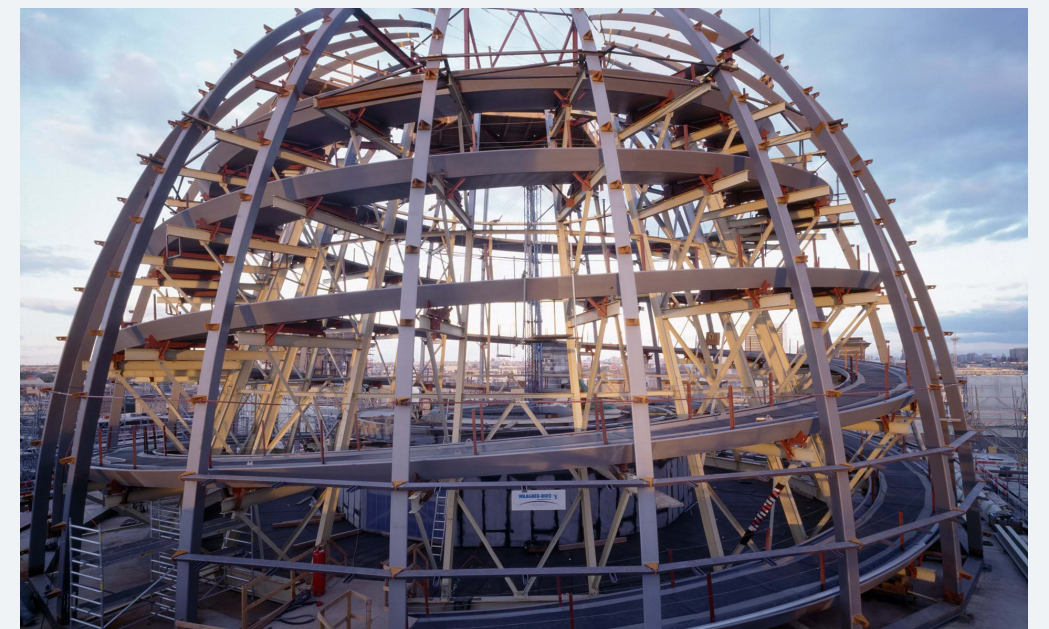


**REICHSTAG PARLIAMENT BUILDING (CUPOLA)**

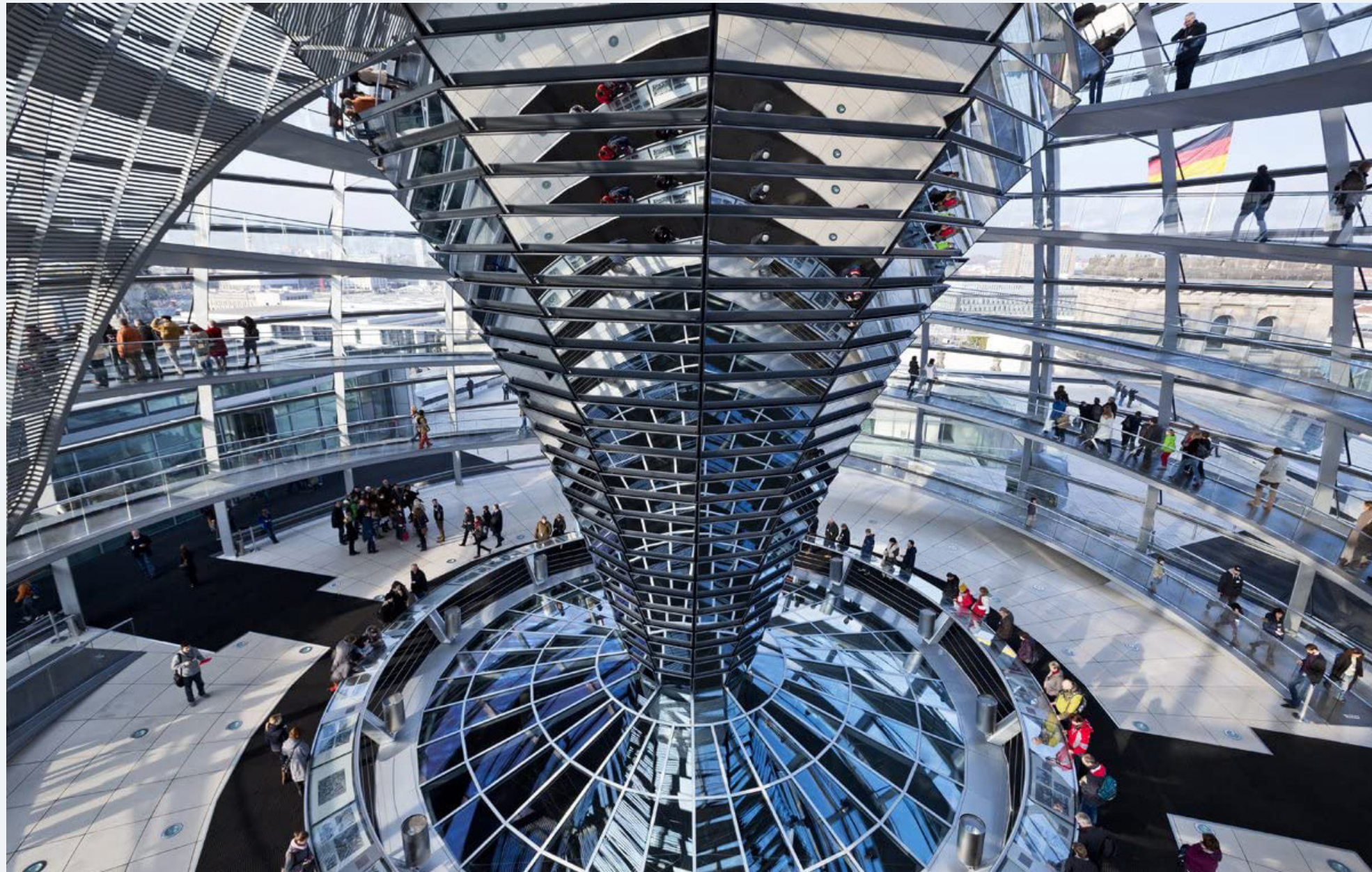
FOSTER+PARTNERS

1999

BERLIN, GERMANY

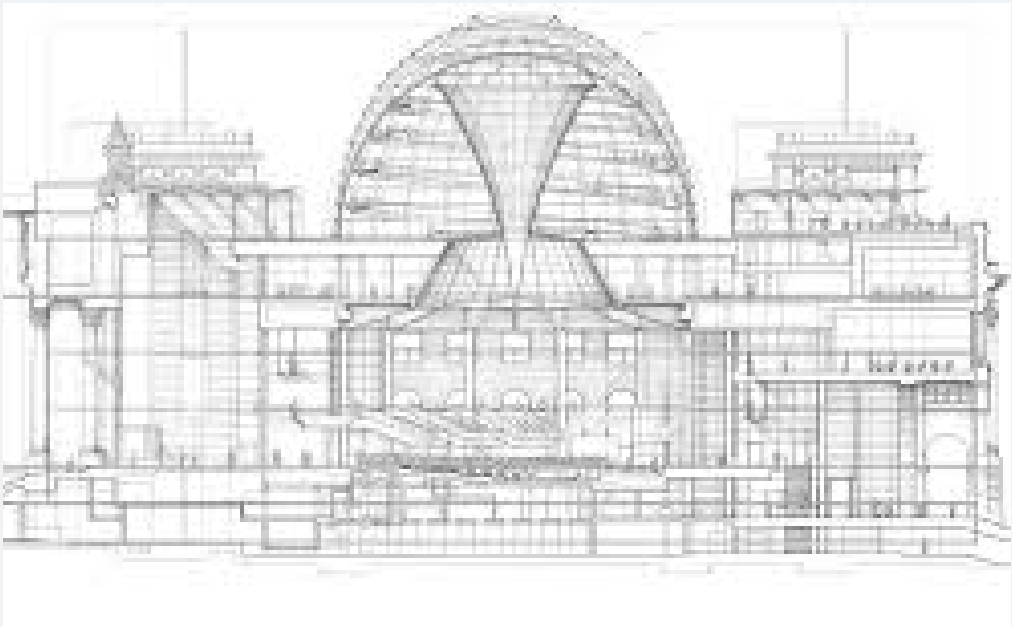
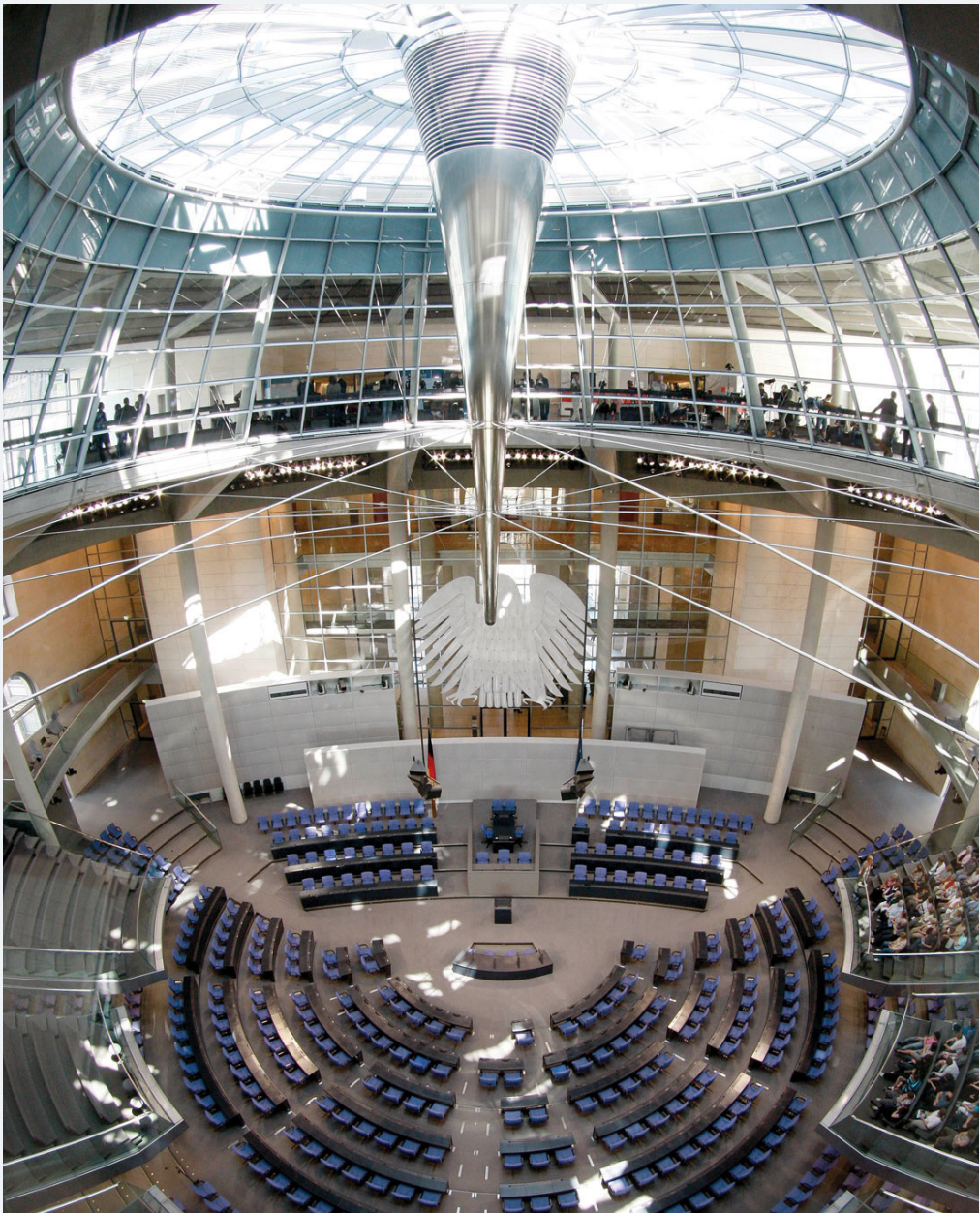






**REICHSTAG PARLIAMENT BUILDING (INTERIOR)**

FOSTER+PARTNERS  
1999  
BERLIN, GERMANY



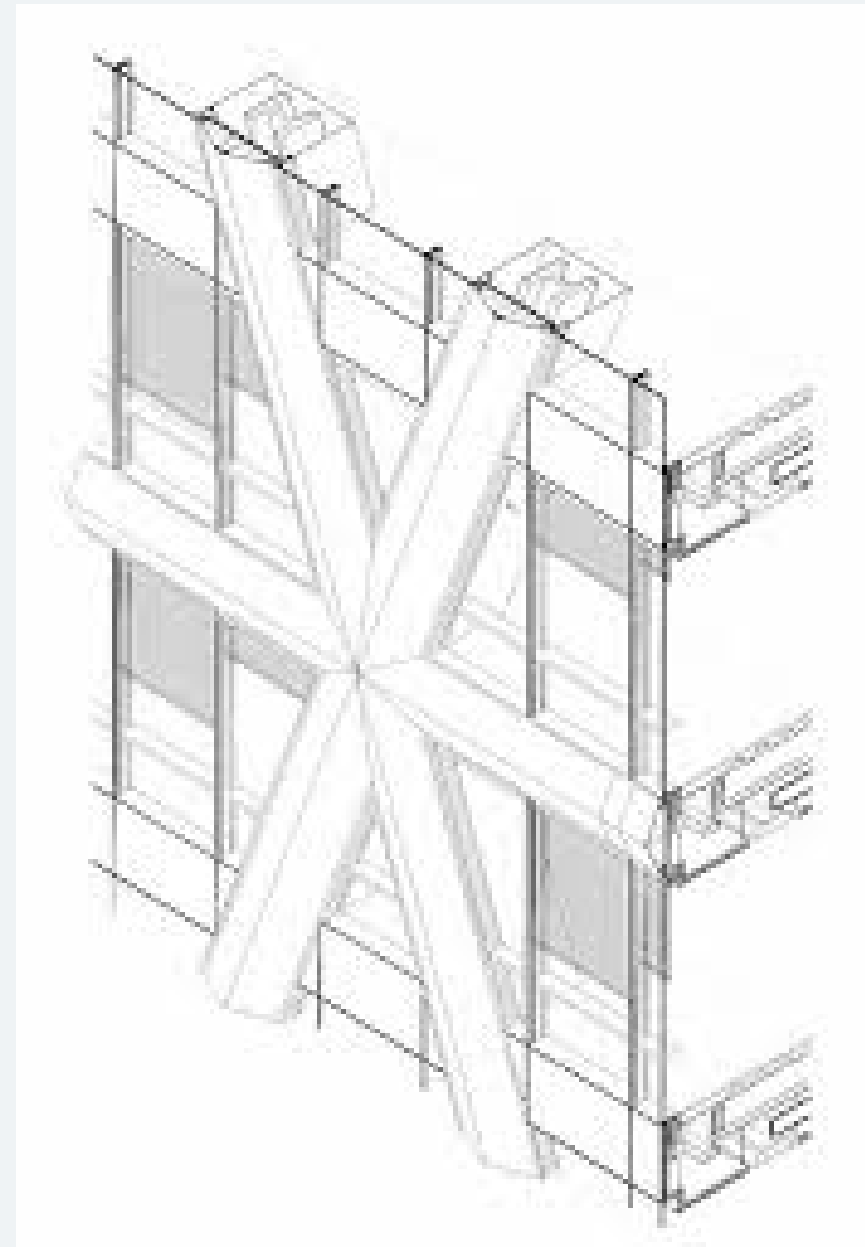


# HEARST HEADQUARTERS

FOSTER+PARTNERS  
2006  
NEW YORK CITY, NEW YORK





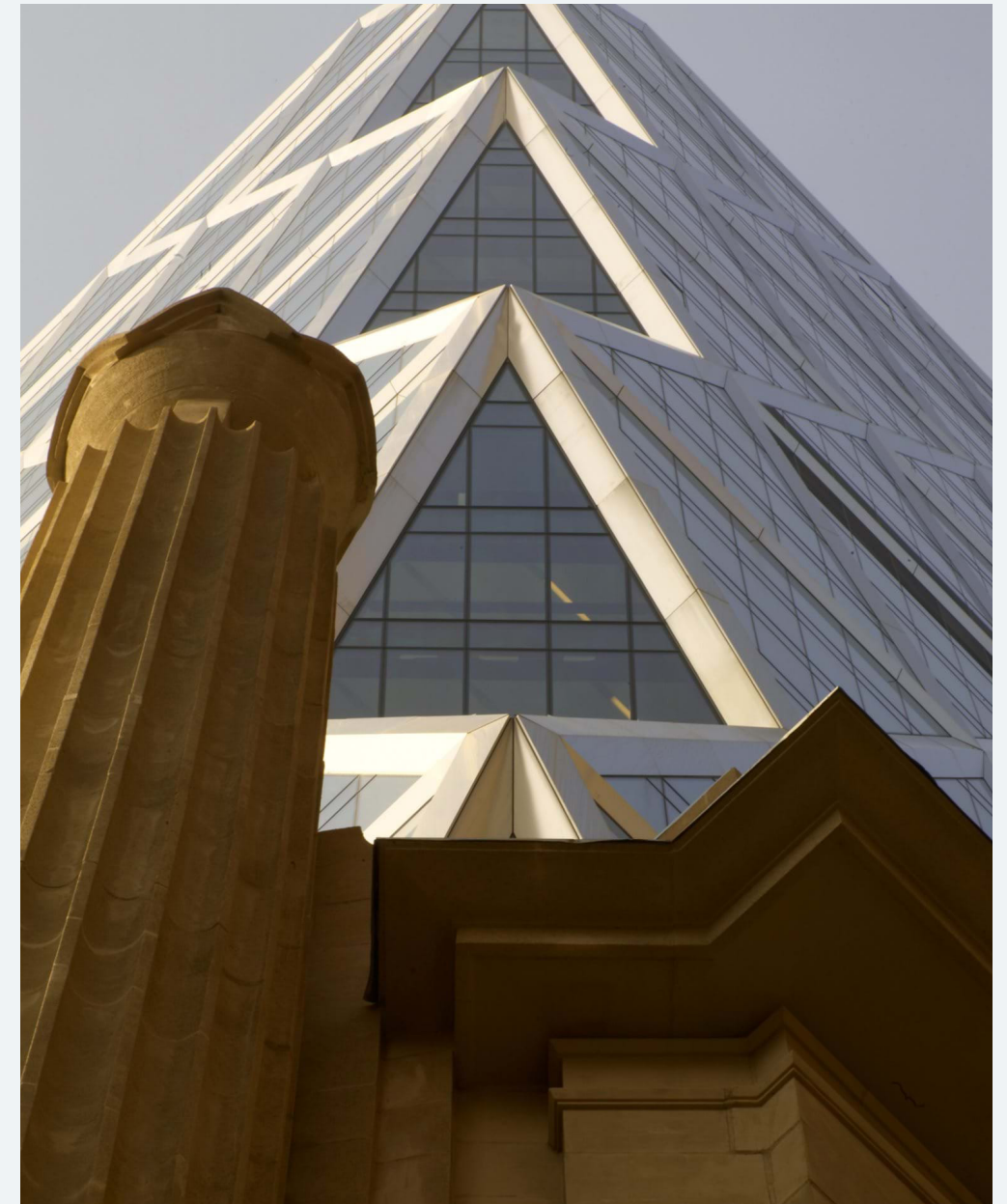


### **HEARST HEADQUARTERS (DETAIL)**

FOSTER+PARTNERS  
2006  
NEW YORK CITY, NEW YORK

### **HEARST HEADQUARTERS (EXTERIOR)**

FOSTER+PARTNERS  
2006  
NEW YORK CITY, NEW YORK



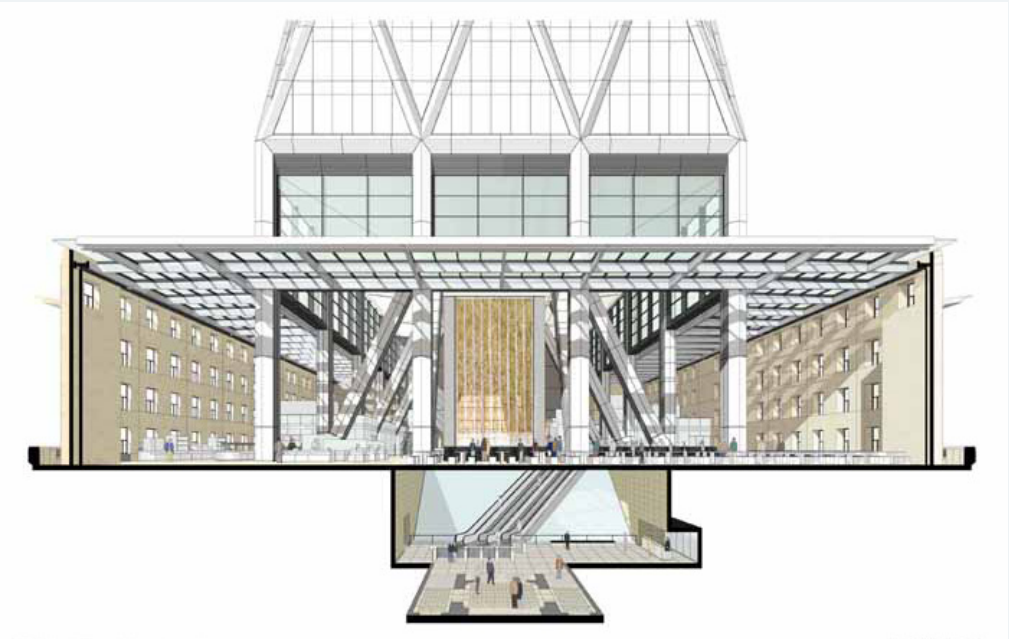
### **HEARST HEADQUARTERS (FACADE)**

FOSTER+PARTNERS  
2006  
NEW YORK CITY, NEW YORK





**HEARST HEADQUARTERS (INTERIOR)**  
FOSTER+PARTNERS  
2006  
NEW YORK CITY, NEW YORK





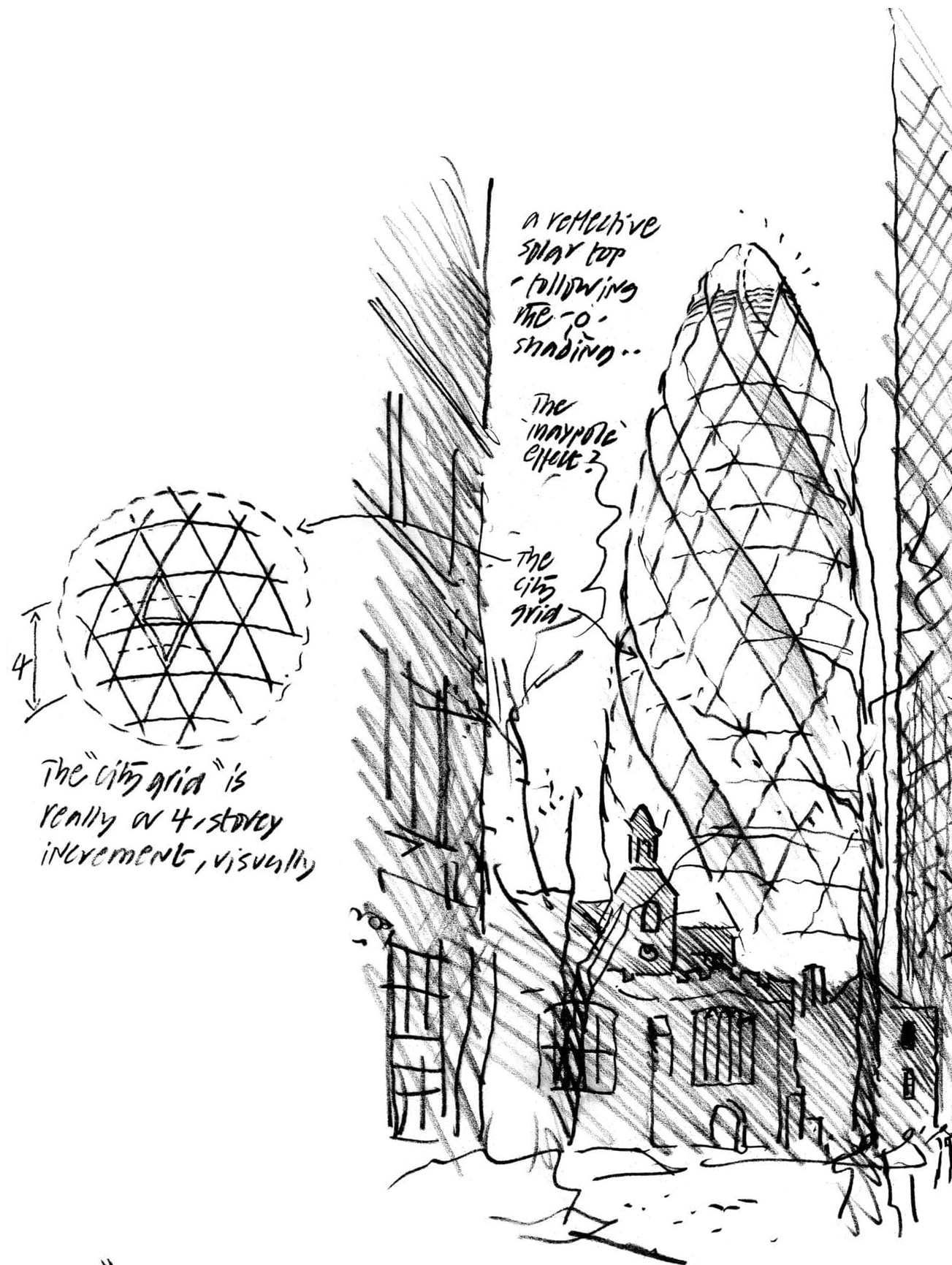


**“THE GHERKIN” 30 ST MARY AXE**  
**London 2004**

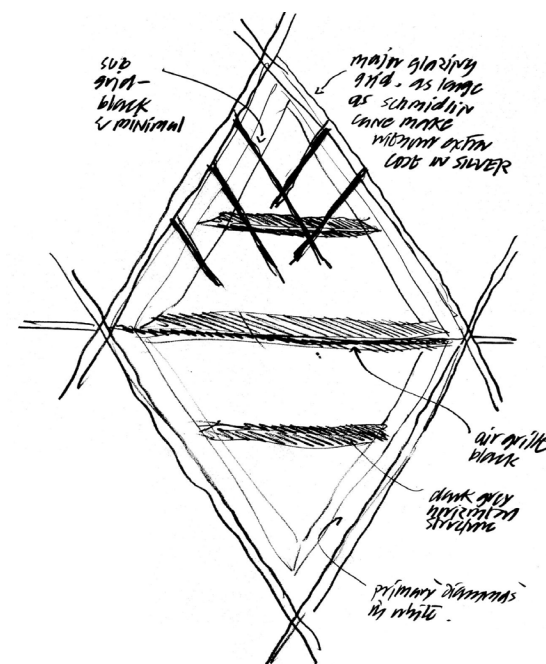


“Public spaces are more important than buildings. They make a city alive.” -Foster

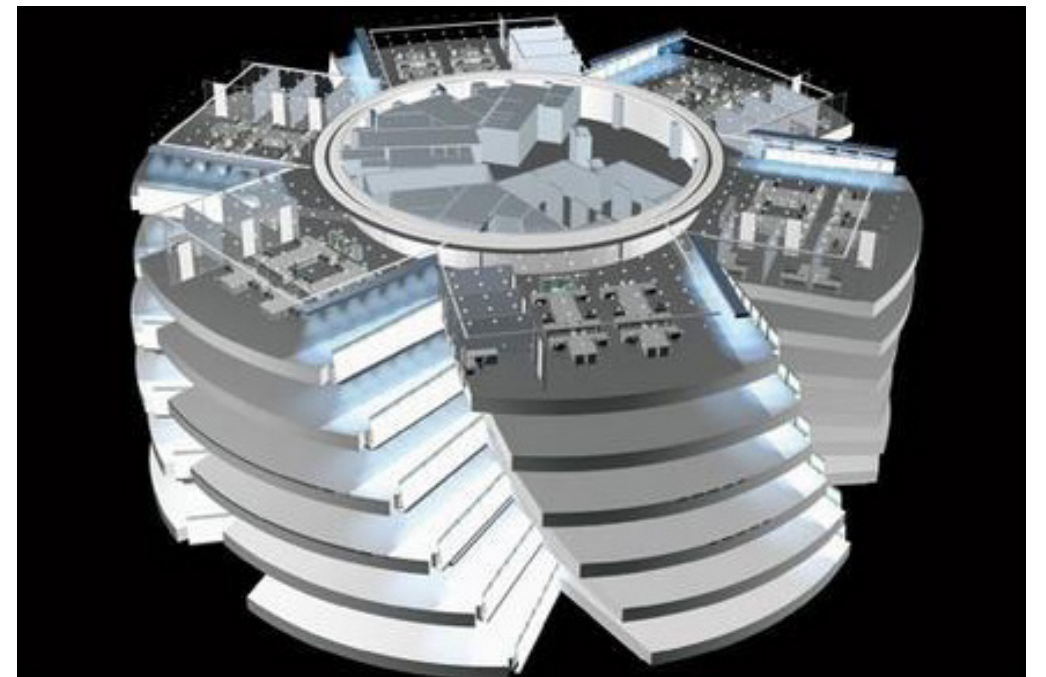
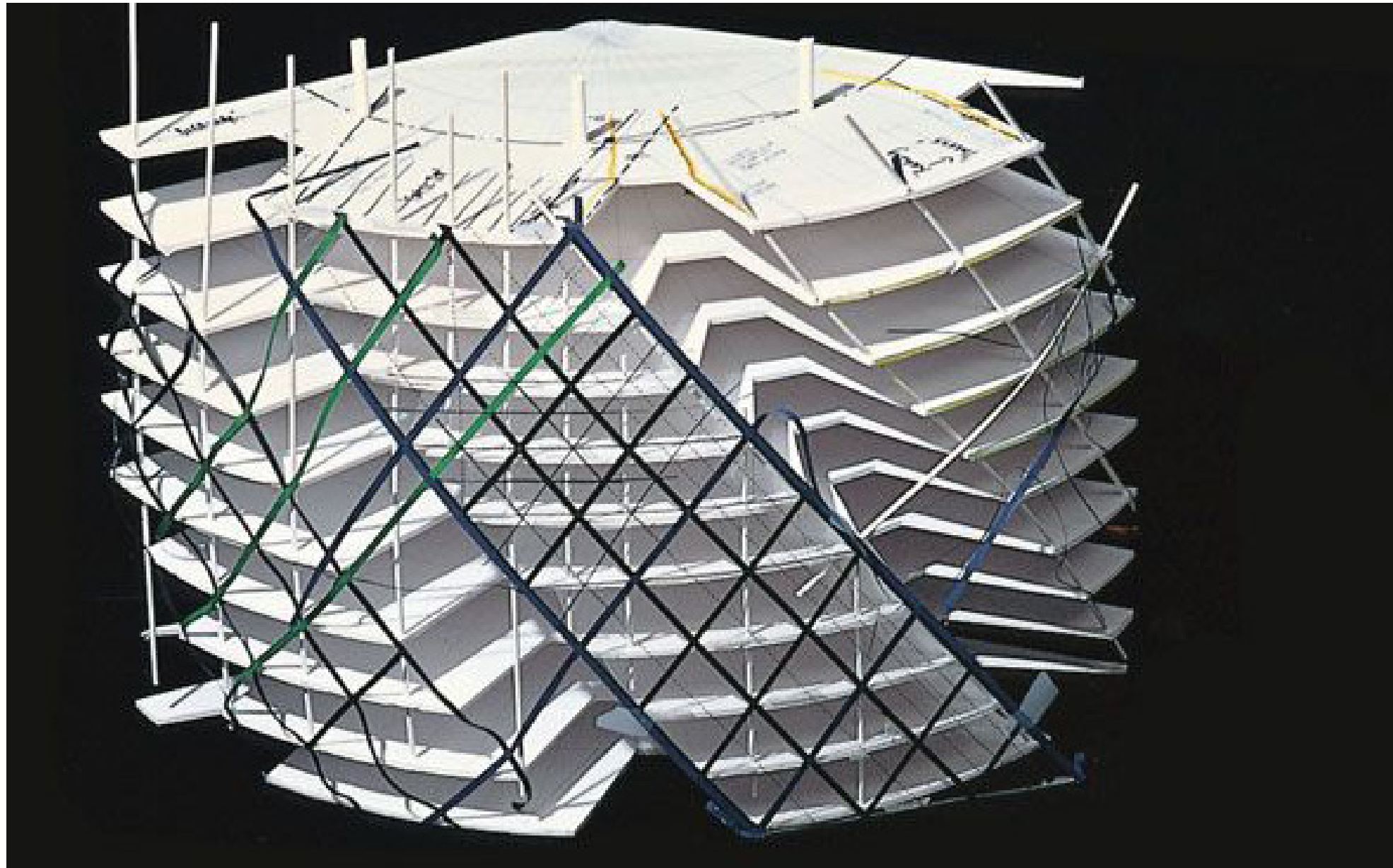




The "city within a city" has always been full of surprises!















## **HONG KONG INTERNATIONAL AIRPORT**

FOSTER+PARTNERS

1998

HONG KONG, CHINA



## **MILLAU VIADUCT**

FOSTER+PARTNERS

2004

MILLAU, FRANCE

# **INFRASTRUCTURE AND TRANSPORTATION**

“You cannot separate the buildings  
out from the infrastructure of cities  
and the mobility of transit”

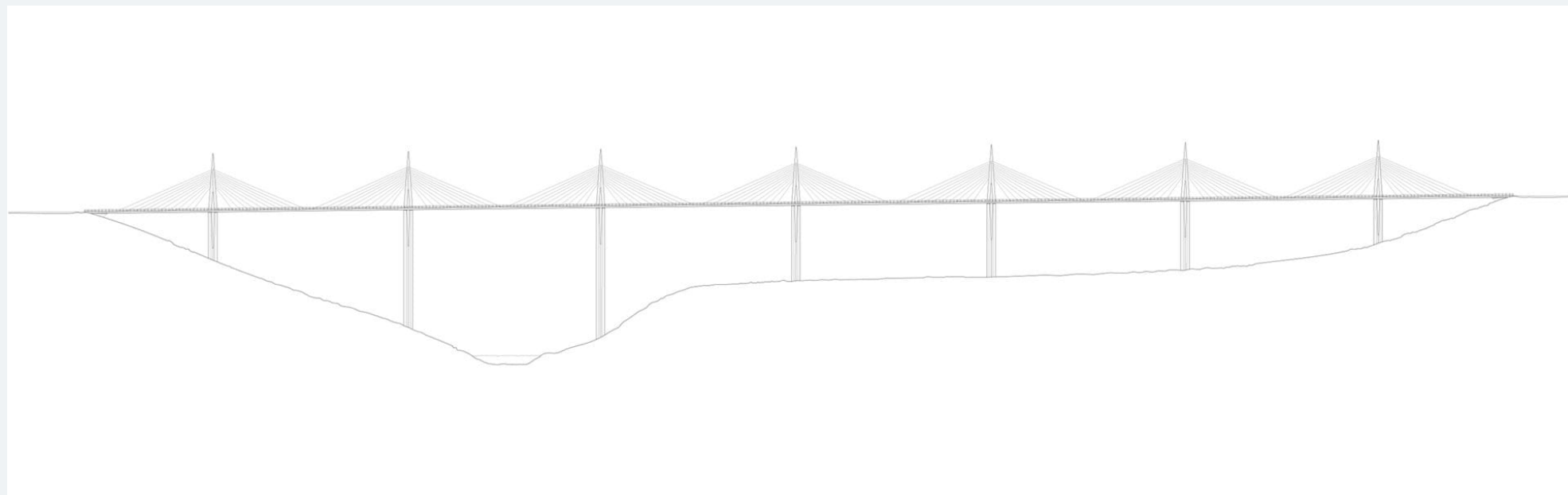
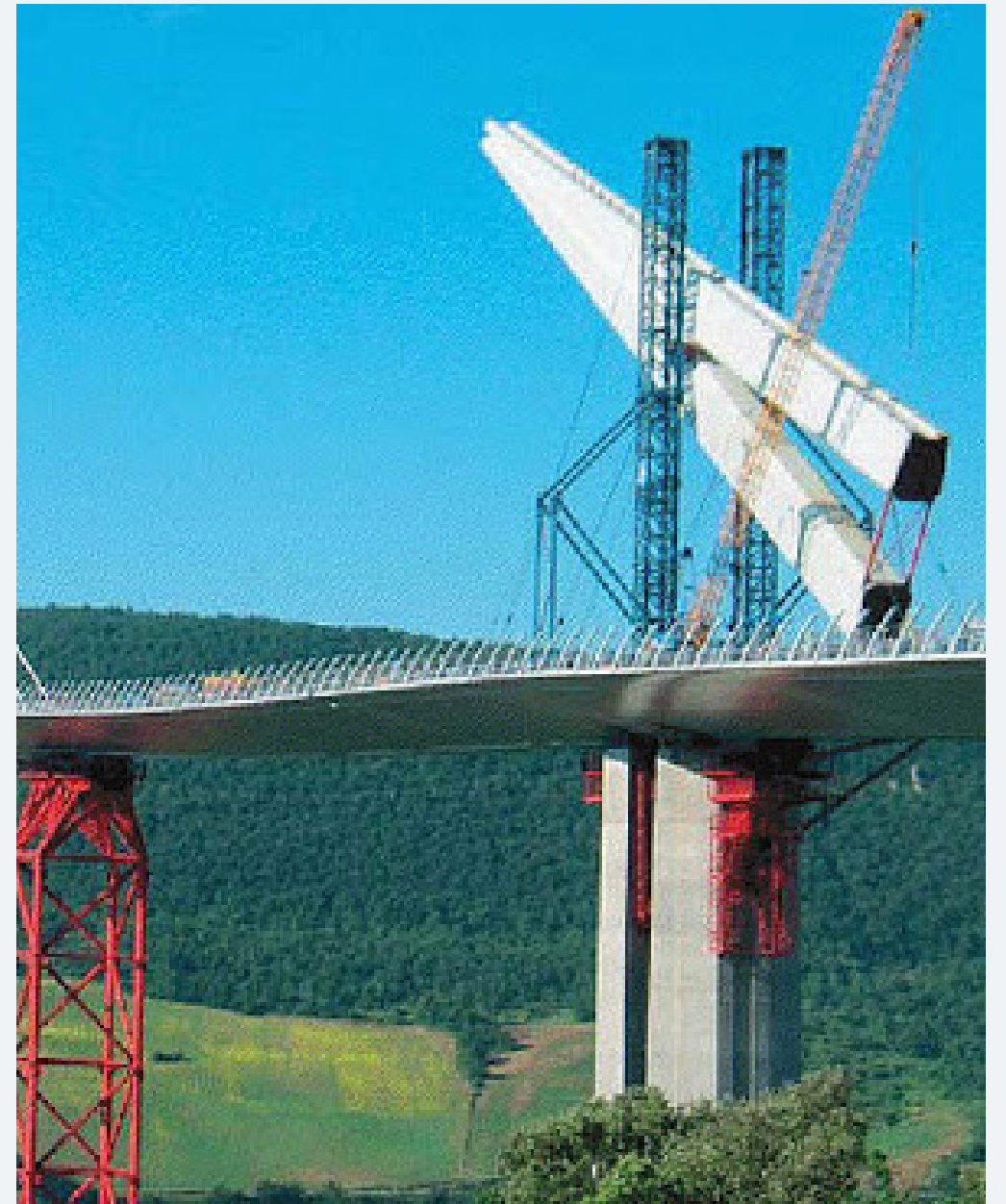
-Norman Foster





**HONG KONG INTERNATIONAL AIRPORT**  
FOSTER+PARTNERS  
1998  
HONG KONG, CHINA

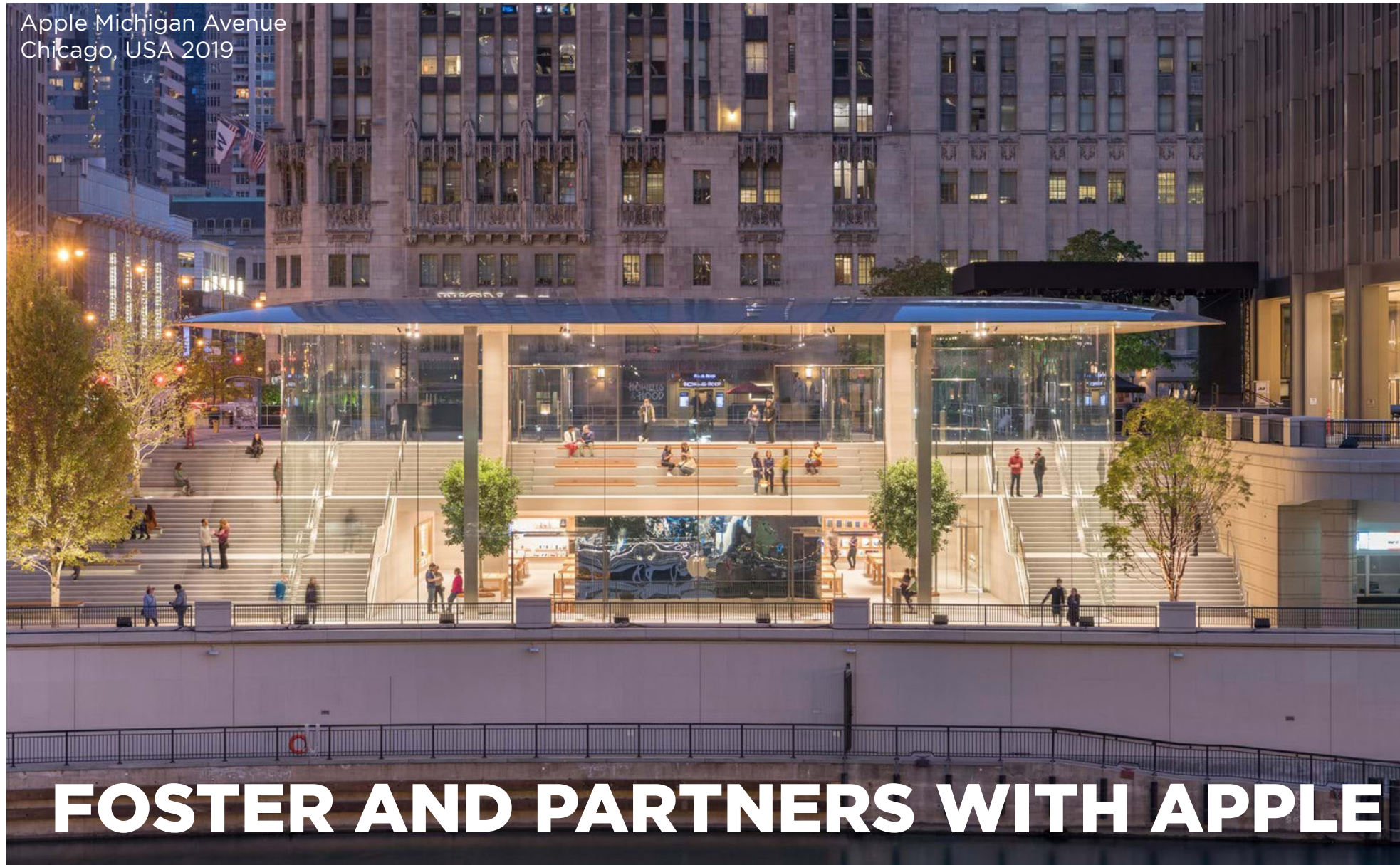




**MILLAU VIADUCT**  
FOSTER+PARTNERS  
2004  
MILLAU, FRANCE



Apple Michigan Avenue  
Chicago, USA 2019



# FOSTER AND PARTNERS WITH APPLE

Apple Fifth Avenue  
New York, USA 2019



Apple Cotai Central  
China, Macau 2018



Steve Jobs Theater  
Cupertino, USA 2017



Apple Aventura  
USA 2019





